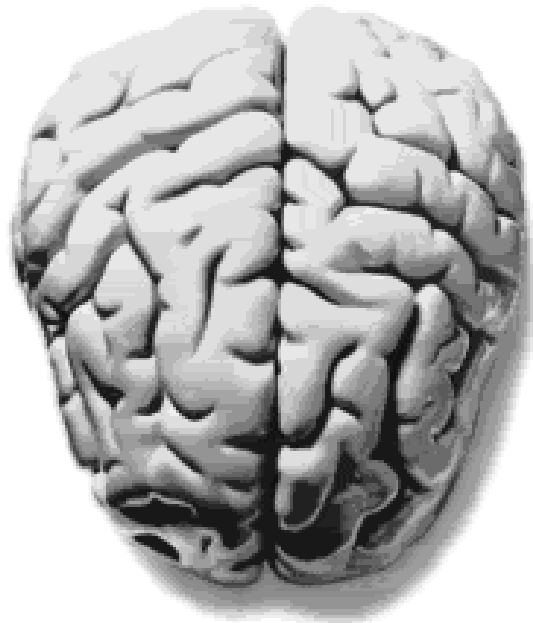


BRAIN FUNCTIONING AND THE IMPACT OF ABI

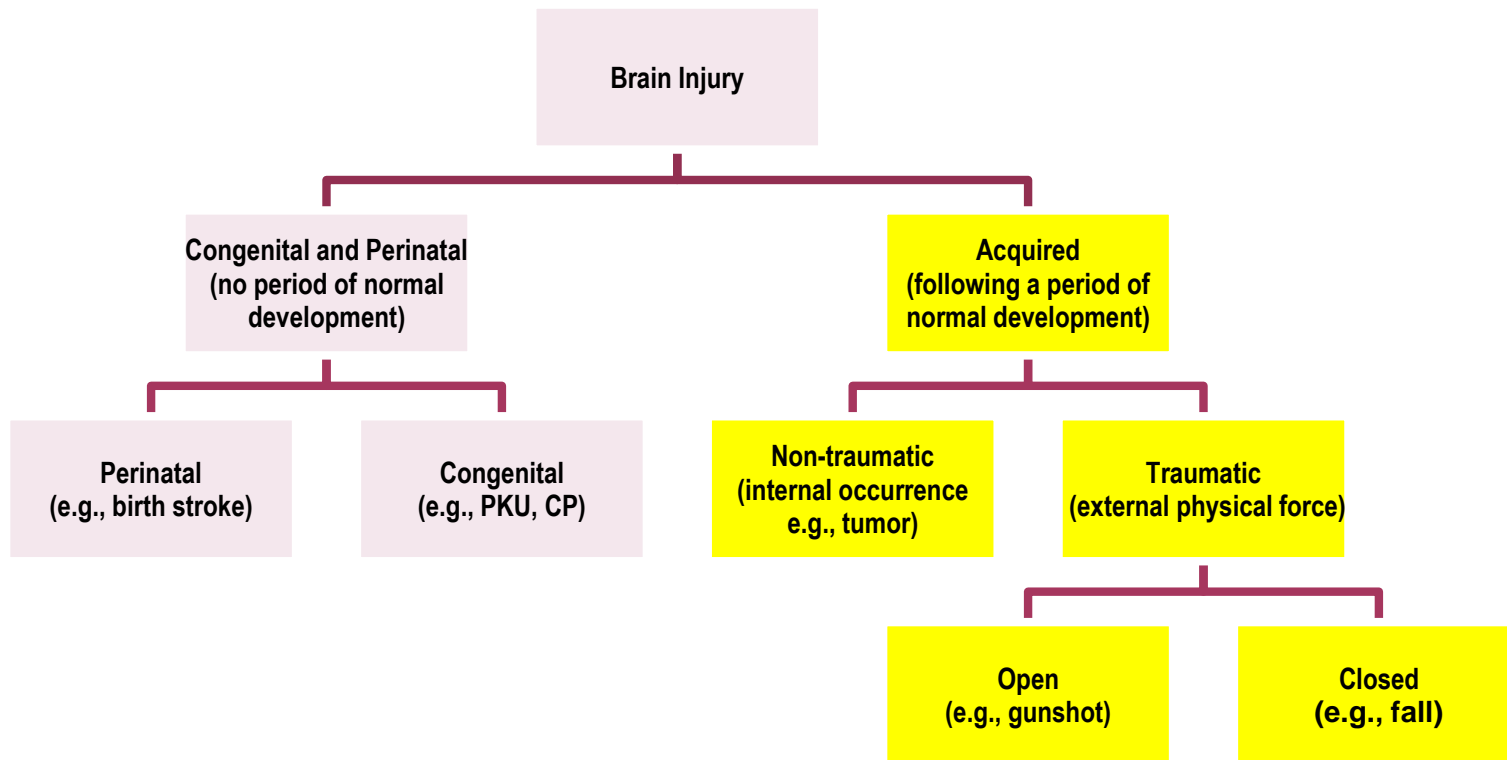
Mandy Tribe M.A.
Educational Consultant
Hospital School Program CHKD



WHAT IS AN ACQUIRED BRAIN INJURY?

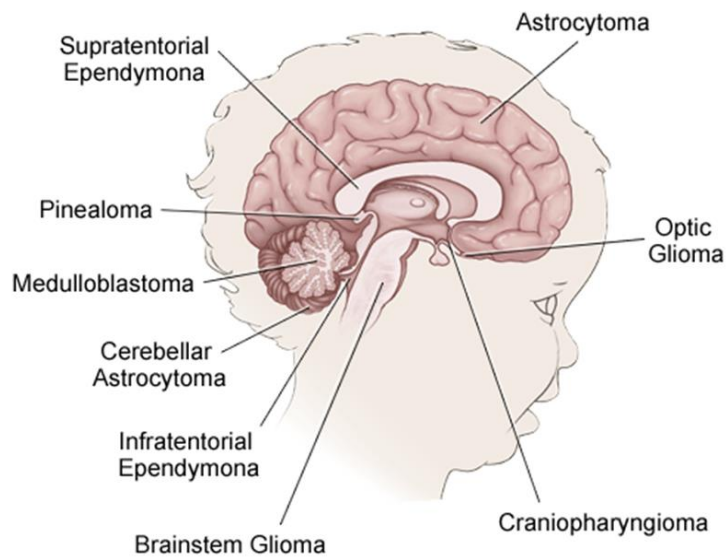


TYPES OF BRAIN INJURY

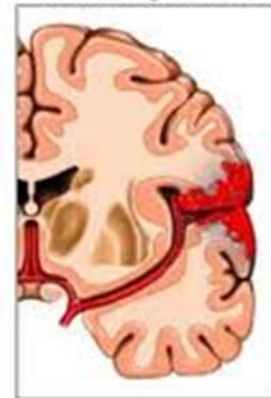


ACQUIRED BRAIN INJURY

Location of Different Types of Brain Tumors

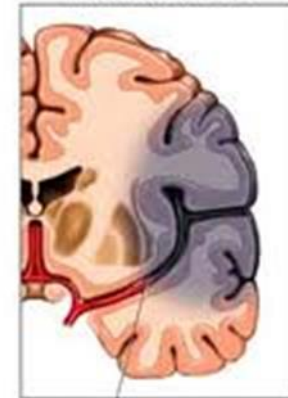


Hemorrhagic Stroke



Hemorrhage/blood leaks into brain tissue

Ischemic Stroke



Clot stops blood supply to an area of the brain

ACQUIRED BRAIN INJURY



**UNIQUE AND CHALLENGING DISABILITY TO
UNDERSTAND**

INCIDENCE



Data from Brain Injury Association of America

INCIDENCE



(Beth Slomine, KKI)

INCIDENCE



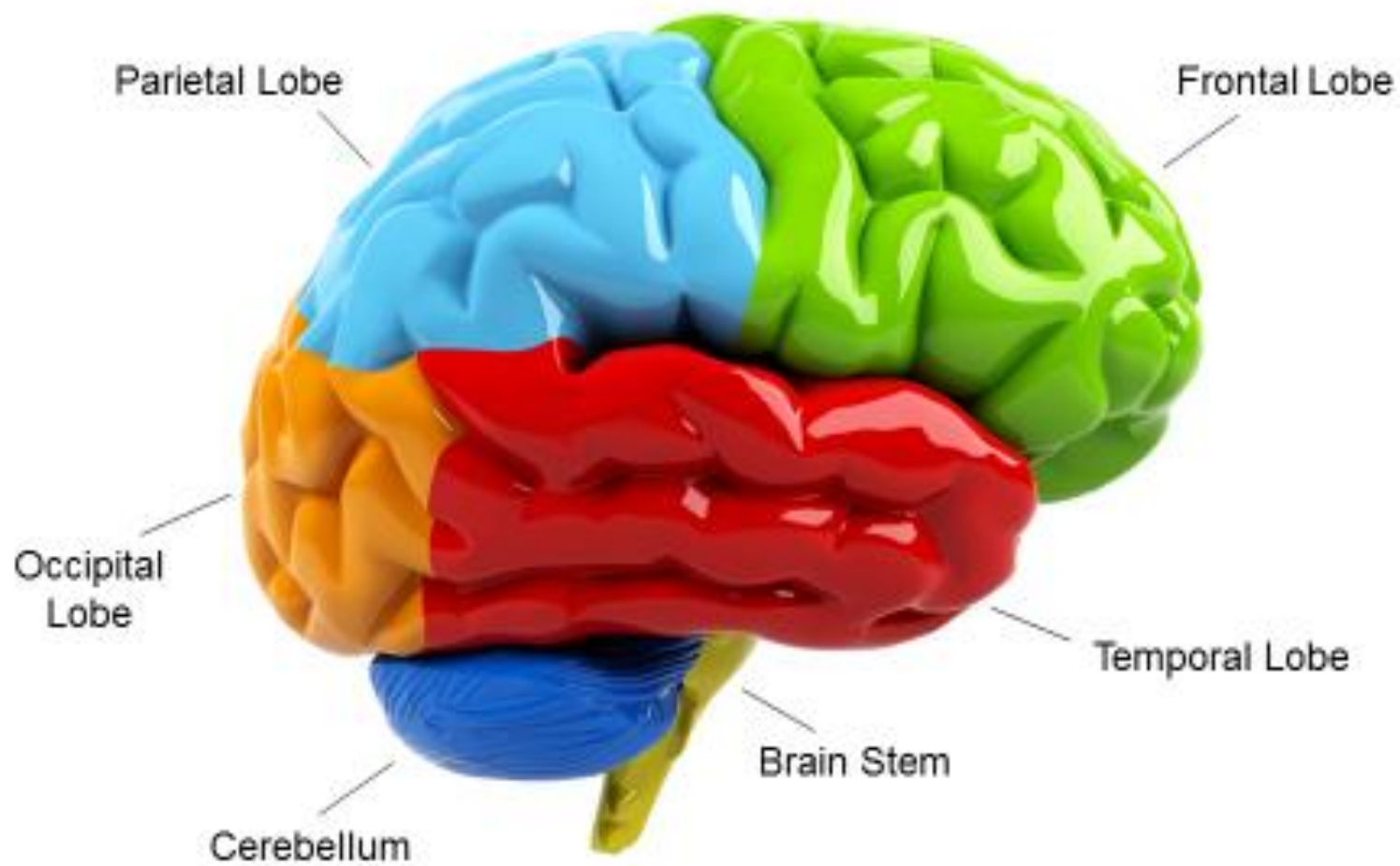
(CDC, 2004)

INCIDENCE



Low incidence disability?

Lobes of the Brain



FRONTAL LOBE



TEMPORAL LOBE



PARIETAL LOBE



OCCIPITAL LOBE



CEREBELLUM

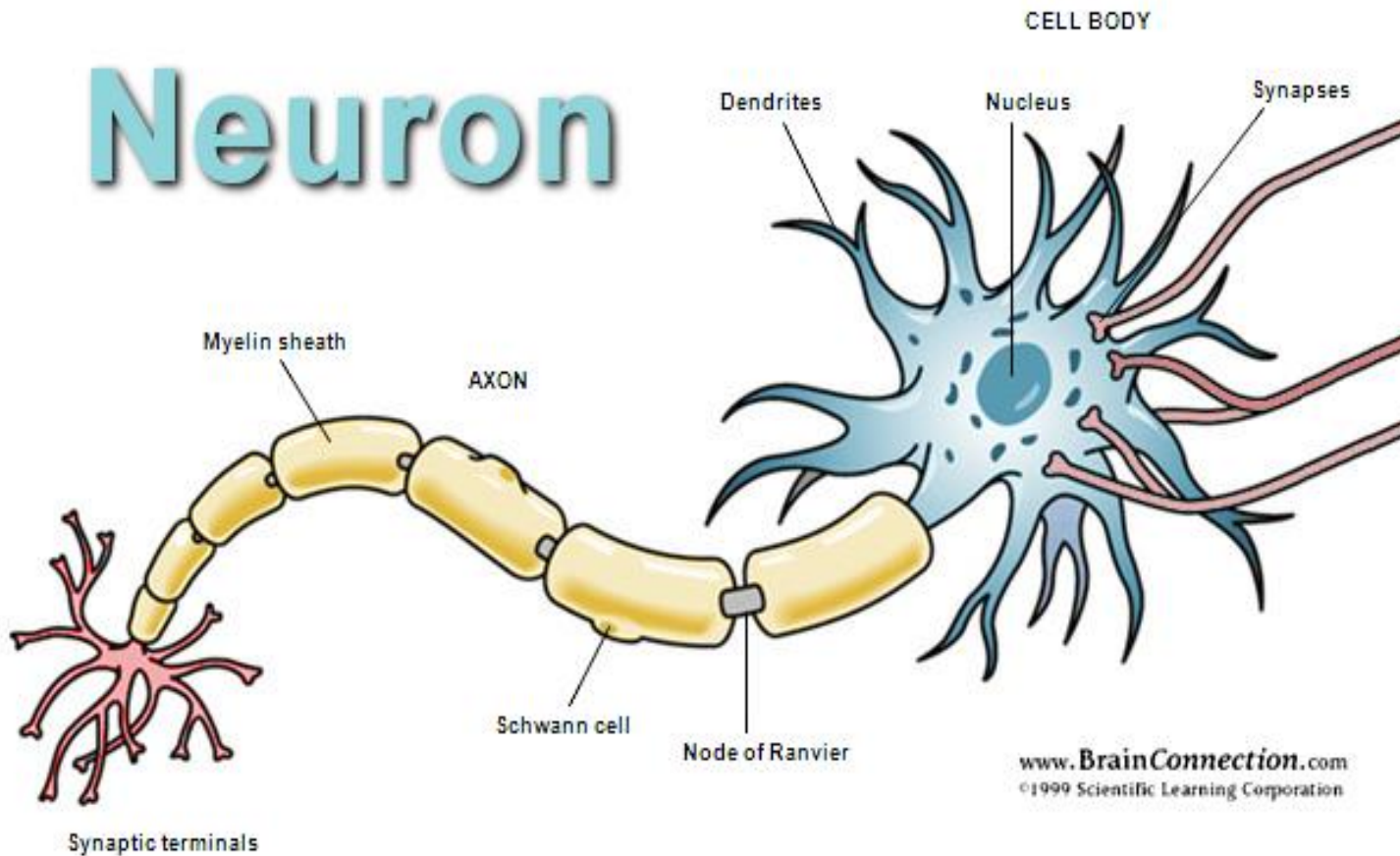


BRAIN STEM



NEURONS

Neuron



CONSEQUENCES

- Physical
- Cognitive
- Social/Behavioral

PHYSICAL



COGNITIVE



BEHAVIORAL




```
import sh.geom.*
import sh.net.*
import sh.media.*
import sh.utils.Time

events := ssScrub:Scrub:isFalse
geom := load volume, but never
net := volume:Number=DEFAULT_VOLUME
media := search for net stream
netConnection := NetConnection:

utils := {
  netStream: netStream
}

hide all meta data
objInfo: Object;
  file
  strSource: String;
  videoFileName: String;
  bg_pic: MovieClip;
```

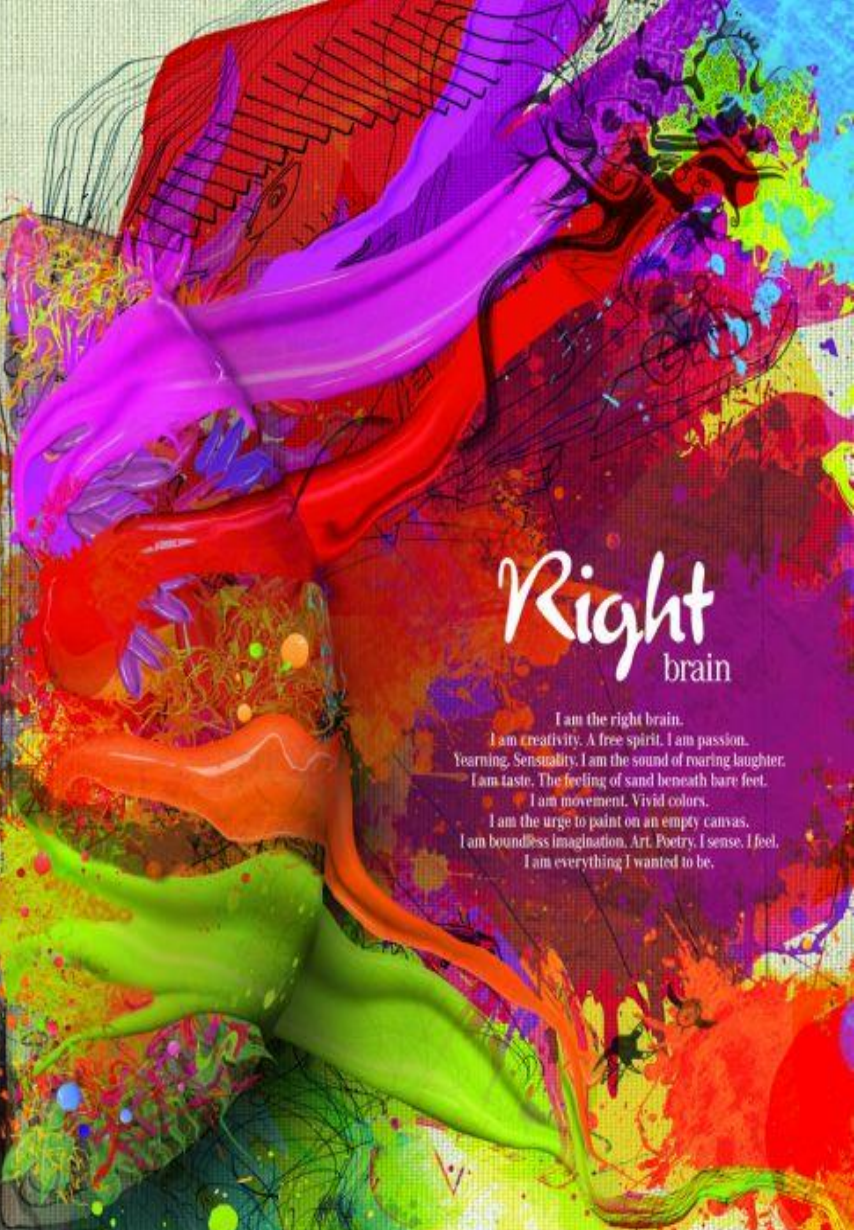
Left brain

I am the left brain.
I am a scientist. A mathematician.
I love the familiar. I categorize. I am accurate. Linear.
Analytical. Strategic. I am practical.
Always in control. A master of words and language.
Realistic. I calculate equations and play with numbers.
I am order. I am logic.
I know exactly who I am.



Right brain

I am the right brain.
I am creativity. A free spirit. I am passion.
Yearning. Sensuality. I am the sound of roaring laughter.
I am taste. The feeling of sand beneath bare feet.
I am movement. Vivid colors.
I am the urge to paint on an empty canvas.
I am boundless imagination. Art. Poetry. I sense. I feel.
I am everything I wanted to be.



Mercedes-Benz
The best or nothing.

BRAIN INJURY IN CHILDREN AND ADOLESCENTS



“GROWING INTO” THE BRAIN INJURY



“GROWING INTO” THE BRAIN INJURY



OTHER FACTS



Having one brain injury puts you at greater risk than the general public for having another brain injury. The risk for a 2nd injury is 3 x greater than the general public; the risk for a 3rd injury is 8 x greater!

OUTCOMES



OUTCOMES



BRAIN INJURY CAN RESEMBLE OTHER DISABILITIES

- **ADHD/ADD**
- **LEARNING DISABILITIES**
- **EMOTIONAL DISTURBANCE**

ADHD/ADD



ADHD/ADD

ADHD is a risk factor for brain injury.



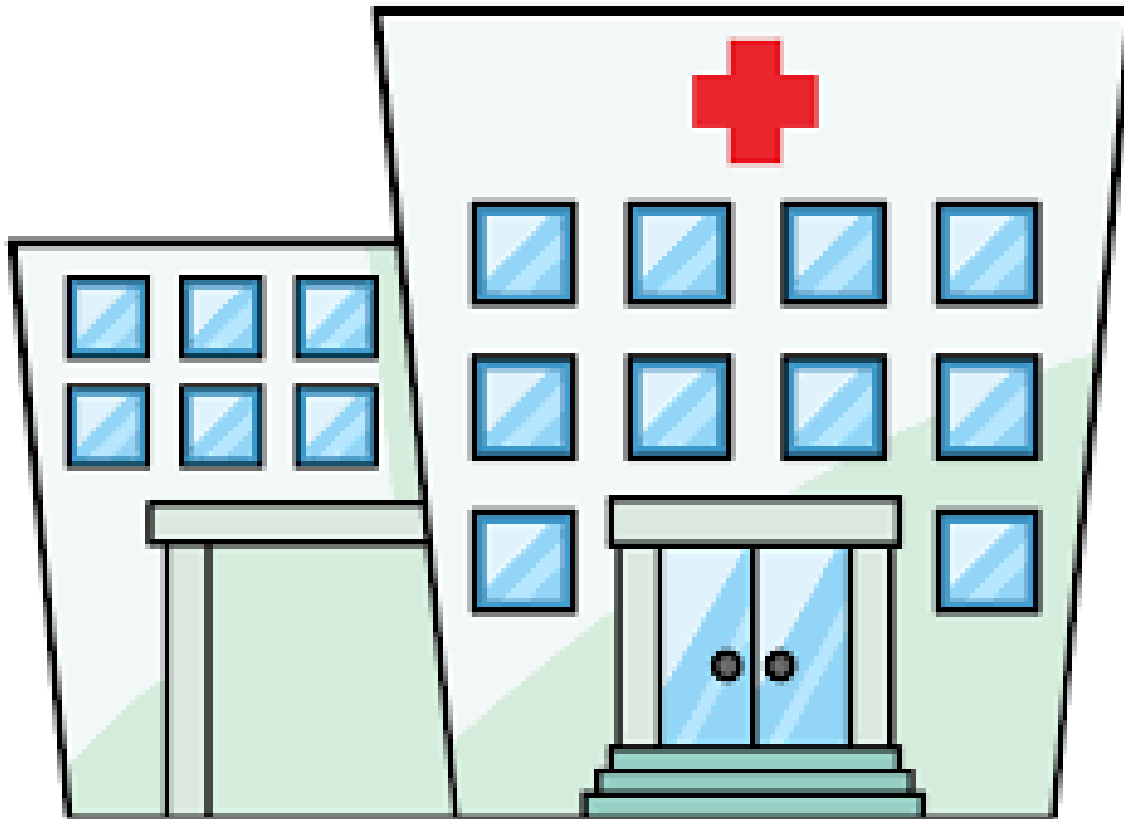
LEARNING DISABILITIES



EMOTIONAL DISTURBANCE



TREATMENTS, APPROACHES, AND STRATEGIES



TREATMENTS, APPROACHES, AND STRATEGIES

APPROACHES AND STRATEGIES

- Generic Management Strategies
- Behavior Management Strategies
- Memory Strategies

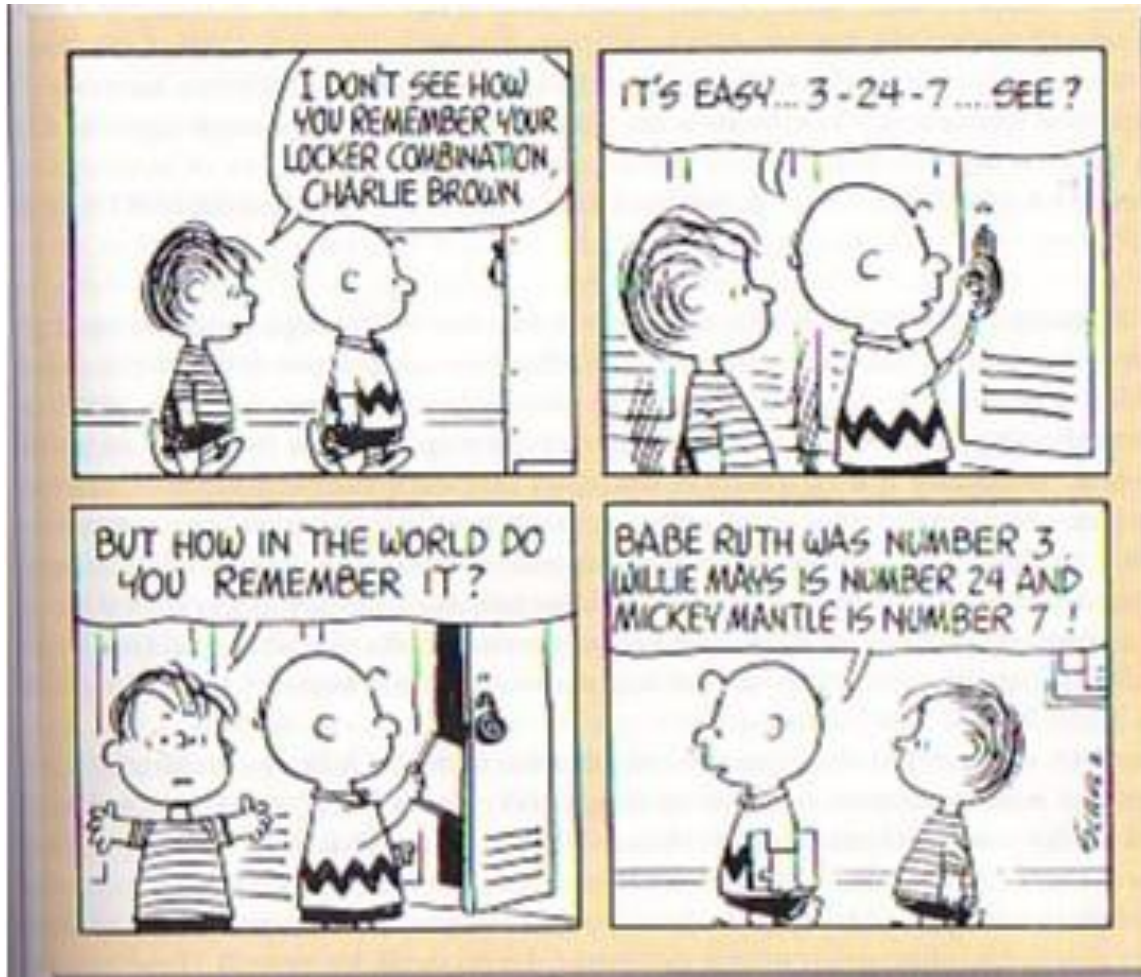
GENERIC MANAGEMENT STRATEGIES



BEHAVIOR MANAGEMENT STRATEGIES



MEMORY DEFICIT STRATEGIES



ABI IS A DISABILITY THAT IS UNIQUE TO EACH INDIVIDUAL



A brain injury survivor typically has a pre-injury self-concept of being “normal” which can often lead to adjustment issues.

*Thank
you*



Betsy Zeigler, ACSW, CCM, CBIS



**BRAIN INJURY
SERVICES**

QUESTIONS



CONTACT INFORMATION

Mandy Tribe M.A.
Educational Consultant

(757) 668-7582
Mandy.Tribe@chkd.org